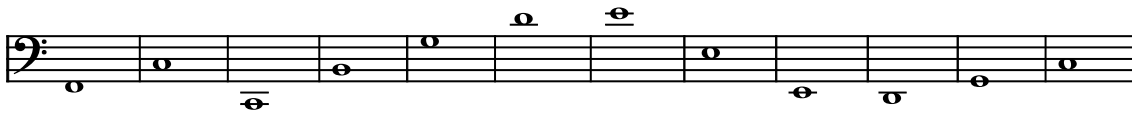


Øvelse 3: Læs følgende toner (læg mærke til nøglen):



Øvelse 4: Læs følgende toner (læg mærke til nøglen):



Øvelse 5: Læs intervallerne. Prøv efterhånden at kunne aflæse intervaller på "øjemål".

Four staves of music, each containing a sequence of notes and rests. The notes are placed on a five-line staff, and the intervals between them are to be identified. The first staff shows intervals of a second, a third, a fourth, a fifth, a sixth, and a seventh. The second staff shows intervals of a second, a third, a fourth, a fifth, a sixth, and a seventh. The third staff shows intervals of a second, a third, a fourth, a fifth, a sixth, and a seventh. The fourth staff shows intervals of a second, a third, a fourth, a fifth, a sixth, and a seventh.

Øvelse 6: Skriv på nodepapir hvert af følgende intervaller og deres omvendingsintervaller:

A single staff of music containing a sequence of notes and rests. The notes are placed on a five-line staff, and the intervals between them are to be identified. The intervals shown are a second, a third, a fourth, a fifth, a sixth, and a seventh.

Øvelse 8: Læs intervallerne og deres størrelse:

Four staves of music, each containing a sequence of notes and rests. The notes are placed on a five-line staff, and the intervals between them are to be identified. The first staff shows intervals of a second, a third, a fourth, a fifth, a sixth, and a seventh. The second staff shows intervals of a second, a third, a fourth, a fifth, a sixth, and a seventh. The third staff shows intervals of a second, a third, a fourth, a fifth, a sixth, and a seventh. The fourth staff shows intervals of a second, a third, a fourth, a fifth, a sixth, and a seventh.

Øvelse 11: Læs intervallerne og deres størrelse:

Two staves of musical notation showing intervals. The first staff is on a treble clef and the second is on a bass clef. Each staff contains a sequence of notes with arrows indicating the intervals between them.

Øvelse 29: Hvis der kun bruges stamtoner - dvs. på de hvide tangenter på klaveret - kan der laves 7 forskellige treklange. Undersøg for hver akkord tertsernes størrelse, og bestem derved hvilken type treklang, det er:

A single staff of musical notation on a treble clef showing seven triads (three-note chords) built on the white keys of the piano.

Øvelse 31: Skriv becifringer til følgende treklange:

Two staves of musical notation showing triads. The top staff is on a treble clef and the bottom staff is on a bass clef. Each staff contains a sequence of triads.

Øvelse 32: Skriv becifring til følgende akkorder:

Two staves of musical notation showing chords. The top staff is on a treble clef and the bottom staff is on a bass clef. Each staff contains a sequence of chords.

Øvelse 33: Med brug af stamtonerne kan der laves 7 forskellige firklange. Undersøg størrelsen af intervallerne i hver af firklange og skriv deres becifring.

A single staff of musical notation on a treble clef showing seven chords (four-note chords) built on the white keys of the piano.

Øvelse 34: Skriv becifring til følgende akkorder:

Exercise 34 shows two staves of musical notation in treble clef. The first staff contains 10 chords, and the second staff contains 10 chords. The chords are: C major, D minor, E minor, F major, G major, A major, B major, C major, D minor, and E minor.

Øvelse 35: Skriv becifring til følgende akkorder:

Exercise 35 shows a piano piece with two staves. The left hand plays chords, and the right hand plays a melodic line. The chords are: C major, D minor, E minor, F major, G major, A major, B major, C major, D minor, and E minor.

Øvelse 36: Skriv becifring til disse udvidede akkorder:

Exercise 36 shows two staves of musical notation. The first staff contains 10 extended chords, and the second staff contains 10 extended chords. The chords are: C major, D minor, E minor, F major, G major, A major, B major, C major, D minor, and E minor.

Øvelse 38: Skriv becifringer til dette lille udsnit af Mozart's Klaversonate KV. 545. Husk at becifringer skal skrives *over* noderne. Marker de akkordfremmede toner:

Exercise 38 shows a snippet of Mozart's Klaversonate KV. 545. The notation is in 4/4 time and features a trill in the right hand. The chords are: C major, D minor, E minor, F major, G major, A major, B major, C major, D minor, and E minor.

Øvelse 47: Lav en funktionsharmonisk analyse af dette udsnit af "When I'm 64" (WH I s. 444).

..... will you still feed me when I'm six - ty - four?

G-dur:

Øvelse 49: Lav en funktionsharmonisk analyse af dette udsnit af "Visen om de atten svaner":

.... om du kun - ne li - de, hvis jeg ba - re....

F-dur:

Øvelse 55: Lav en funktionsharmonisk analyse af akkorderne i starten af "Body and Soul" (WH II s. 374):

My heart is sad and lone - ly For you I sigh for you dear

C-dur:

Øvelse 65: Sæt taktstregere i følgende noder, således at det passer med den angivne taktart:

Sov på min arm. Nat - ten gem - mer un - der sin vin - ge din blus - sen - de kind.

Här är gu - da - gott - - att va - ra, o, vad li - - - vet dock är skönt!

Æb - ler ly - ser rødt på træ - er - nes gre - ne, hø - sten går ind.

Højt på en gren en kra - ge sim sa labimbam ba sa la du sa la dim Højt på en gren en kra - ge sad.

Drøm - te mig en drøm i nat om sil - ke og ær - lig pæl

Øvelse 67: Sæt taktstregere i følgende noder, således at det passer med den angivne taktart:

Some-one told me long a-go there's a calm be-fore the storm I know And it's been com-in' for some time

Some-thing in the way she moves at-tracts me like no ot-her lo-ver Some-thing in the way she woos me

Øvelse 68: Sæt taktstregere i følgende noder, således at det passer med betoningerne i melodien og med den angivne taktart:

Der er et yn-digt land det står med bre-de bø-ge nær

sal-ten ø-ster-strand, nær sal-ten ø-ster-strand

En en-lig lil-le mu-se har det svæ-re end man

tror, man be-fin-der sig skidt mel-lem him-mel og jord

I see trees of green red ro-ses too. I see them bloom

for me and you and I think to my-self: What a won-der-ful world.

When I find my-self in times of trou-ble Mo-ther Ma-ry comes to me

speak-ing words of wis-dom Let it be - -